

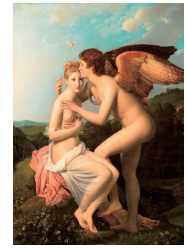
# Exhibition Schedule 2023

## Painting Love in the Louvre Collections

**March 1 (Wed.) – June 12 (Mon.) Special Exhibition Gallery 1E**

Love, one of the basic human emotions, has been an important theme in Western art since ancient times. This exhibition illuminates the subject through 73 paintings selected from the Louvre Museum's enormous collections. The works depict many different types of love, including love among the gods of Greek and Roman mythology, love between people who actually lived, and Christian love. Please enjoy examining various aspects of love in works from the 16th to the late 19th century by some of Europe's preeminent painters.

**Organized by:** The National Art Center, Tokyo; Musée du Louvre; Nippon Television Network Corporation; The Yomiuri Shimbun; BS Nippon Corporation; Nippon Broadcasting System, Inc.



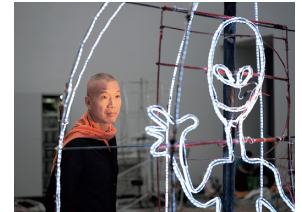
Baron François Gérard *Cupid and Psyche*, also known as *Psyche Receiving Cupid's First Kiss* 1786, oil on canvas, 96 x 132 cm. Photo ©RMN-Grand Palais (Musée du Louvre) / Tony Querrec / distributed by ANP-DNP.com

## Cai Guo-Qiang: Ramble in the Cosmos — From Primeval Fireball Onward

**June 29 (Thu.) – August 21 (Mon.) Special Exhibition Gallery 1E**

Internationally-renowned contemporary artist Cai Guo-Qiang (b. 1957, Quanzhou, China) presents a major solo exhibition, co-organized by Saint Laurent. Cai is acclaimed for his gunpowder paintings, installations, and outdoor explosion events. The nearly nine years he spent in Japan (from the end of 1986 to 1995) was a critical period in his artistic career; he has been active in New York since 1995. Originating from Cai's landmark exhibition *Primeval Fireball*—his artistic big bang—the exhibition reviews Cai's artistic journey through the themes of the cosmos and the unseen world.

**Organized by:** The National Art Center, Tokyo; SAINT LAURENT



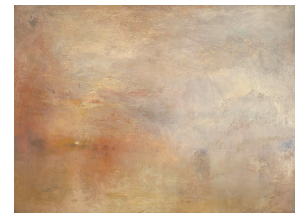
Cai Guo-Qiang and his installation *Encounter with the Unknown* at the Museum of Art Pudong in Shanghai, 2021. Photo by Mengjia Zhao, courtesy Cai Studio

## LIGHT: Works from the Tate Collection

**July 12 (Wed.) – October 2 (Mon.) (TBC) Special Exhibition Gallery 2E**

Working with a careful selection of artworks from the Tate collection in the UK based on the theme of light, this exhibition traces the original creativity of artists across two centuries, spanning from the end of the eighteenth century to the present day. Bringing together about 120 works arranged into thematic sections that cross time and space this exhibition examines how artists across generations have been pre-occupied by the qualities and luminosity of light in all types of medium; ranging from painting, photography, sculpture, drawing, kinetic art, installation and the moving image.

**Organized by:** The National Art Center, Tokyo; Nikkei Inc.; TV TOKYO Corporation; BS TV TOKYO Corporation; in cooperation with Tate



Joseph Mallord William Turner, *Sun Setting over a Lake*, c.1840, Oil paint on canvas, 91 x 122.6 cm, Tate. Photo: Tate

## Exhibition of Yves Saint Laurent

**September 20 (Wed.) – December 11 (Mon.) Special Exhibition Gallery 1E**

Consisting of eleven sections, this exhibition presents a comprehensive introduction to Yves Saint Laurent through 110 of the designer's looks as well as accessories, drawings, and photographs that extend from the brand's first collection to the establishment of its singular style.

The exhibition, organized with the full cooperation of the Musée Yves Saint Laurent Paris, marks the first retrospective of the designer's works ever to be staged in Japan after his death. Please join us as we savor the world of magnificent beauty created by Yves Saint Laurent.

**Organized by:** The National Art Center, Tokyo; The Sankei Shimbun; TBS; Sony Music Entertainment (Japan) Inc.



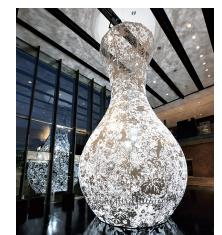
Short cocktail dress - Homage to Piet Mondrian Fall/Winter 1965/66 Yves Saint Laurent Collection © Yves Saint Laurent © Musée Yves Saint Laurent / Alexandre Gunkinger

## Shinji Ohmaki (TBD)

**November 1 (Wed.) – December 25 (Mon.) Special Exhibition Gallery 2E**

The artist Shinji Ohmaki is acclaimed for his large-scale installations, which extract space and time and convey them as physical sensations. When we step into his works, our bodies and senses are severely shaken, and we encounter new perspectives on a variety of phenomena in the world and our own existence. In this exhibition, Ohmaki presents a new installation in which he makes the most of a huge space with eight-meter-high ceilings.

**Organized by:** The National Art Center, Tokyo



Shinji Ohmaki, *Gravity and Grace*, 2016 Aichi Triennale 2016, rainbow caravan, Toyohashi Arts Theatre PLAT, Aichi, Japan. Photo: Tetsuo Ito ©2016 Aichi Triennale Organizing Committee

## Visiting the Center

**Hours:** 10:00 ~ 18:00 Fridays and Saturdays 10:00-20:00 (Last admission is 30 minutes before closing)

**Closed:** Tuesdays (Open on March 21 (Tue.), May 2(Tue.) and closed on March 22 (Wed.)instead), the end of the year through the New Year's Holidays

**Access:** Tokyo Metro Chiyoda Line Nogizaka Station (C05) Direct access from Exit 6  
Tokyo Metro Hibiya Line Roppongi Station (H04) Approximately 5-minute walk from Exit 4a  
Toei Dodo Subway Line Roppongi Station (E23) Approximately 4-minute walk from Exit 7  
※ No parking

**Contact:** The National Art Center, Tokyo  
7-22-2 Roppongi, Minato-ku, Tokyo 106-8558 Japan  
TEL : (+81)47-316-2772(Hello Dial) URL : <https://www.nact.jp/english>

