

Exhibition Schedule for 2026

As places where people meet, connect, and share ideas, art and cultural institutions have the power to initiate diverse activities and foster hope for the future.

Even in today's world, when global unrest, increasingly frequent natural disasters, and accelerating climate change make it hard to envision the future, the National Art Center, Tokyo (NACT) maintains an ongoing commitment to the importance of people connecting and collaborating through its activities.

In August 2022, the International Council of Museums (ICOM) updated its definition of museums, stating that they "offer varied experiences for education, enjoyment, reflection and knowledge sharing." These words align with the values that the NACT is committed to carrying forward.

In 2026, we are planning exhibitions across many genres, from 15th–16th century art to modern and contemporary art as well as fashion and manga. This year's themes are "diverse artistic expression" and "women's creation." We believe these exhibitions will offer fresh discoveries and inspiring experiences from a variety of viewpoints.

At the Center, visitors can discover new creative perspectives while experiencing the joys of learning, reflection, enjoyment, and discovery. In 2026, we will continue to engage audiences of all ages with the Center's programs, offering opportunities that deepen understanding of others. We look forward to sharing many rewarding moments with you, and invite you to look ahead with us to the coming year.

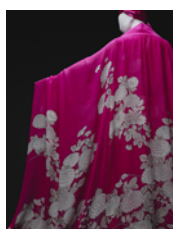
Osaka Eriko

Director General / The National Art Center, Tokyo



YBA&BEYOND:
British Art in the 90s from the Tate Collection
 February 11 (Wed) — May 11 (Mon), 2026

Wolfgang Tillmans, *The Cock (kiss)*, 2002
 © Wolfgang Tillmans, courtesy Maureen Paley, London;
 Galerie Buchholz, Berlin/Cologne; David Zwirner, New York/Hong Kong



HANAE MORI Vital Type:
The 100th Anniversary of Birth
 April 15 (Wed) — July 6 (Mon), 2026

Hanae Mori, *Evening ensemble (jumpsuit, caftan)*
 "Chrysanthemum Pajama Dress," 1966
 HANAE MORI, Iwami Art Museum

Picasso, through the Eyes of Paul Smith:
Adventure of Playful Spirits
 June 10 (Wed) — September 21 (Mon), 2026



Masterpieces of the Renaissance
from the Musée du Louvre
 September 9 (Wed) — December 13 (Sun), 2026

Leonardo da Vinci
Portrait of a Woman, incorrectly known as La Belle Ferronnière
 c. 1490–1497, oil on panel, 63 x 45 cm, Musée du Louvre, Paris
 © Grand Palais-Rmn (musée du Louvre) / Michel Utardo



(左)©萩尾望都/小学館 (中)©山岸凉子 (右)©大和和紀/講談社

Shojo Manga Infinity: Moto Hagio, Ryoko Yamagishi, and Waki Yamato
 October 28 (Wed), 2026 — February 8 (Mon), 2027

Special Exhibition

YBA & BEYOND:

British Art in the 90s from the Tate Collection

February 11 (Wed) — May 11 (Mon), 2026

Venue: The National Art Center, Tokyo / Special Exhibition Gallery 2E

This exhibition explores the dynamic evolution of British art from the late 1980s to the early 2000s. After going through the Thatcher era (1979–1990), a charged and uncertain social climate gave rise to a new generation of artists who challenged traditional norms and embraced bold, experimental practices. Many of the newer generation of artists who came to prominence in the 1990s were referred to in the art and popular media under the title Young British Artists (YBAs). Alongside other artists active at the time, these artists explored themes such as popular culture, personal identity, and shifting social structures. They worked across a diverse range of media, including painting, sculpture, photography, video, and installation. Featuring around 100 works by approximately 60 artists, the exhibition traces the radical creativity and groundbreaking approaches that redefined British art in the 1990s.



Wolfgang Tillmans, *The Cock (kiss)*, 2002
© Wolfgang Tillmans, courtesy Maureen Paley, London;
Galerie Buchholz, Berlin/Cologne;
David Zwirner, New York/Hong Kong

Special Exhibition

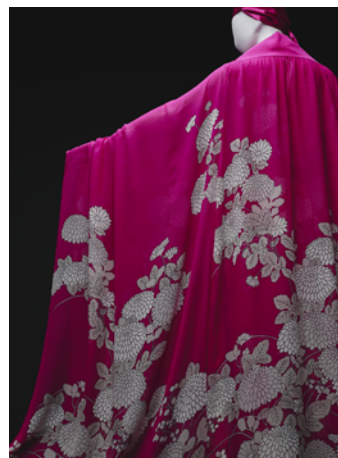
HANAE MORI Vital Type:

The 100th Anniversary of Birth

April 15 (Wed) — July 6 (Mon), 2026

Venue: The National Art Center, Tokyo / Special Exhibition Gallery 1E

Hanae Mori began her career in the 1950s, first gaining recognition for her work in film costume design. As a designer who was also a wife and mother, she represented a new image of womanhood in postwar Japan. She later unveiled her work in New York and Paris, consistently showcasing the beauty and refinement of Japanese textiles and craftsmanship while conveying both artistic vision and technical mastery. This exhibition surveys the full scope of Mori's long career through approximately 400 works.



Hanae Mori, Evening ensemble (jumpsuit, caftan)
"Chrysanthemum Pajama Dress," 1966
HANAE MORI, Iwami Art Museum

Special Exhibition

Picasso, through the Eyes of Paul Smith: Adventure of Playful Spirits

June 10 (Wed) — September 21 (Mon), 2026

Venue: The National Art Center, Tokyo / Special Exhibition Gallery 2E

British designer Paul Smith, celebrated for his traditional tailoring and playful use of color, has conceived the art direction of this exhibition, drawing inspiration from works by Pablo Picasso (1881-1973) in the collection of the Musée National Picasso–Paris. The space, designed with a free-spirited approach, is filled with the vivid colors and playful energy characteristic of Smith's clothing and accessories. The exhibition presents works from throughout Picasso's career in a loosely chronological arrangement.

Special Exhibition

Masterpieces of the Renaissance from the Musée du Louvre

September 9 (Wed) — December 13 (Sun), 2026

Venue: The National Art Center, Tokyo / Special Exhibition Gallery 1E

This exhibition highlights essential characteristics of Renaissance art, which flourished in Italy and elsewhere in Europe during the 15th and 16th centuries, through more than 50 masterpieces of paintings, sculptures, prints, and decorative arts selected from the collection of the Louvre. Featured works by Renaissance masters include Leonardo da Vinci's *Portrait of a Woman*, known as *La Belle Ferronnière*, making its first appearance in Japan.



Leonardo da Vinci
Portrait of a Woman, incorrectly known as La Belle Ferronnière
c. 1490-1497, oil on panel, 63 x 45 cm, Musée du Louvre, Paris
© GrandPalaisRmn (musée du Louvre) / Michel Urtado

Special Exhibition

Shojo Manga Infinity: Moto Hagio, Ryoko Yamagishi, and Waki Yamato

October 28 (Wed), 2026 — February 8 (Mon), 2027

Venue: The National Art Center, Tokyo / Special Exhibition Gallery 2E

To commemorate the 20th anniversary of the National Art Center, Tokyo's opening, a three-person exhibition will showcase the careers of three giants of *shojo* (girls') manga: Moto Hagio, Ryoko Yamagishi, and Waki Yamato. Hagio, Yamagishi, and Yamato all debuted as manga artists in the late 1960s and went on to be central figures in the 1970s "golden age of *shojo* manga," when the genre greatly expanded its creative possibilities. They have continued to publish actively up to the present day, making them witnesses to a history era of artistic diversity and innovation. This exhibition retraces their creative paths through original drawings from their best-known works and valuable archival materials, while also exploring their respective careers and sources of inspiration.



Exhibitions Schedule

Special Exhibition Gallery 2E

1

2

3

4

5

6

7

8

9

10

11

12

YBA&BEYOND: British Art in the 90s from the Tate Collection

February 11 (Wed), 2026 — May 11 (Mon), 2026

Special Exhibition Gallery 2E

Picasso, through the Eyes of Paul Smith: Adventure of Playful Spirits

June 10 (Wed), 2026 — September 21 (Mon), 2026

Special Exhibition Gallery 2E

Shojo Manga Infinity: Moto Hagio, Ryoko Yamagishi, and Waki Yamato

October 28 (Wed), 2026 — February 8 (Mon), 2027

Special Exhibition Gallery 2E

HANAE MORI Vital Type: The 100th Anniversary of Birth

April 15 (Wed), 2026 — July 6 (Mon), 2026

Special Exhibition Gallery 1E

Masterpieces of the Renaissance from the Musée du Louvre

September 9 (Wed), 2026 — December 13 (Sun), 2026

Special Exhibition Gallery 1E

1

2

3

4

5

6

7

8

9

10

11

12

Special Exhibition Gallery 1E

About The National Art Center, Tokyo

The National Art Center, Tokyo (NACT) was the fifth institution to be established as part of the Independent Administrative Institution National Museum of Art. Our mission is to make a contribution to culture through art in order to achieve mutual understanding and coexistence. While we do not have a permanent collection, since opening in 2007, we have constantly worked to become an art center that enables people from various regions and countries to experience a wide range of artistic expressions, acquire knowledge, and encounter diverse values. Moreover, in addition to hosting a broad spectrum of exhibitions in the facility's 14,000-meter-square space (one of the largest of display areas in Japan), the Center works to collect, present, and provide access to art-related information and resources, initiate educational programs, and facilitate cross-cultural exchanges.

Opening Hours / Contact Information

The National Art Center, Tokyo

7-22-2 Roppongi Minato-ku Tokyo 106-8558 Japan

<https://www.nact.jp/english/>

Inquiries: TEL: (+81) 47-316-2772 (Hello Dial)

Opening Hours

Daily: 10:00-18:00 (Last Admission: 17:30)

Fridays and Saturdays:

10:00-20:00 (Last Admission: 19:30)

Closing Days

Tuesdays

*On Tuesdays that fall on national holidays the Center will be open, and closed the next weekday.

Access

- Tokyo Metro Chiyoda Line
Nogizaka Station
Direct access from Exit 6
- Tokyo Metro Hibiya Line
Roppongi Station
Approximately 5-minute walk from Exit 4a
- Toei Oedo Subway Line
Roppongi Station
Approximately 4-minute walk from Exit 7

Press Inquiries

The exhibition press images are available on our website for downloads:

<https://forms.office.com/r/EFahyTU9SU>

The National Art Center, Tokyo

Public Relations

E-mail: pr@nact.jp